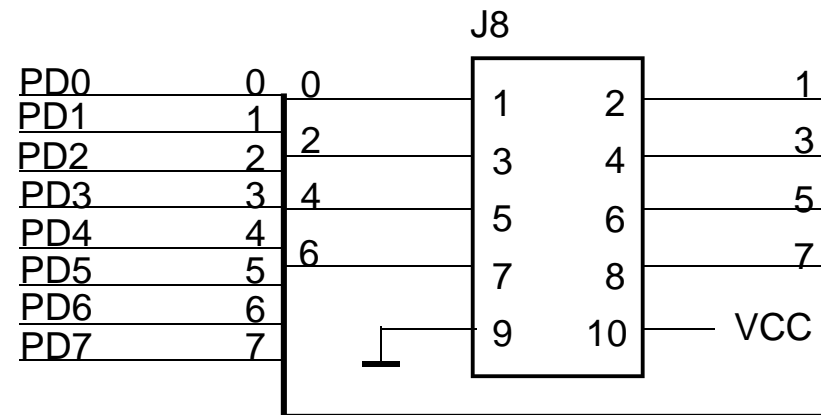
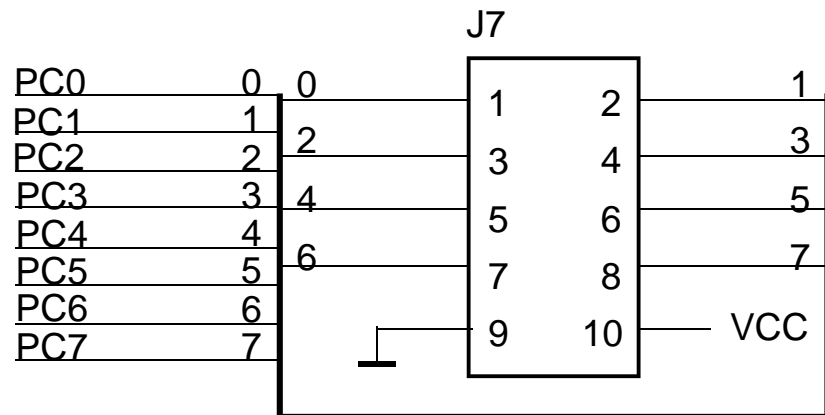
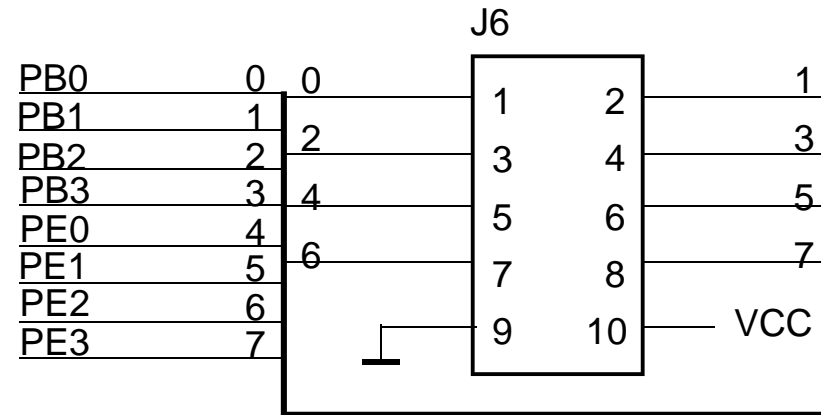
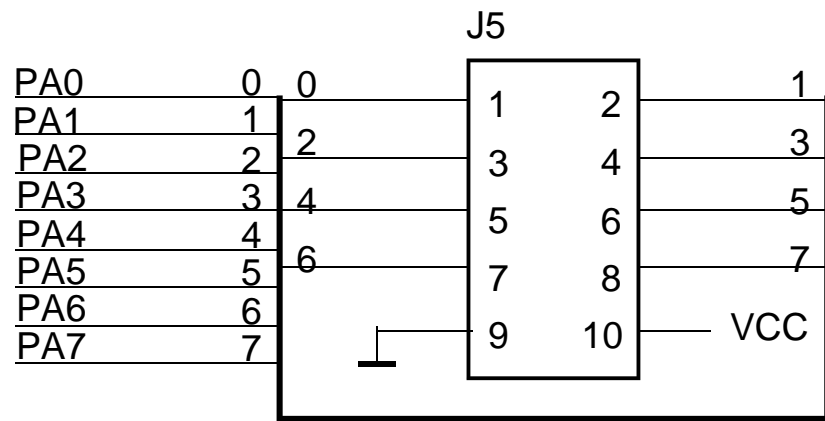


### Xmega-Trainer Typ 2

Blatt 1 von 13

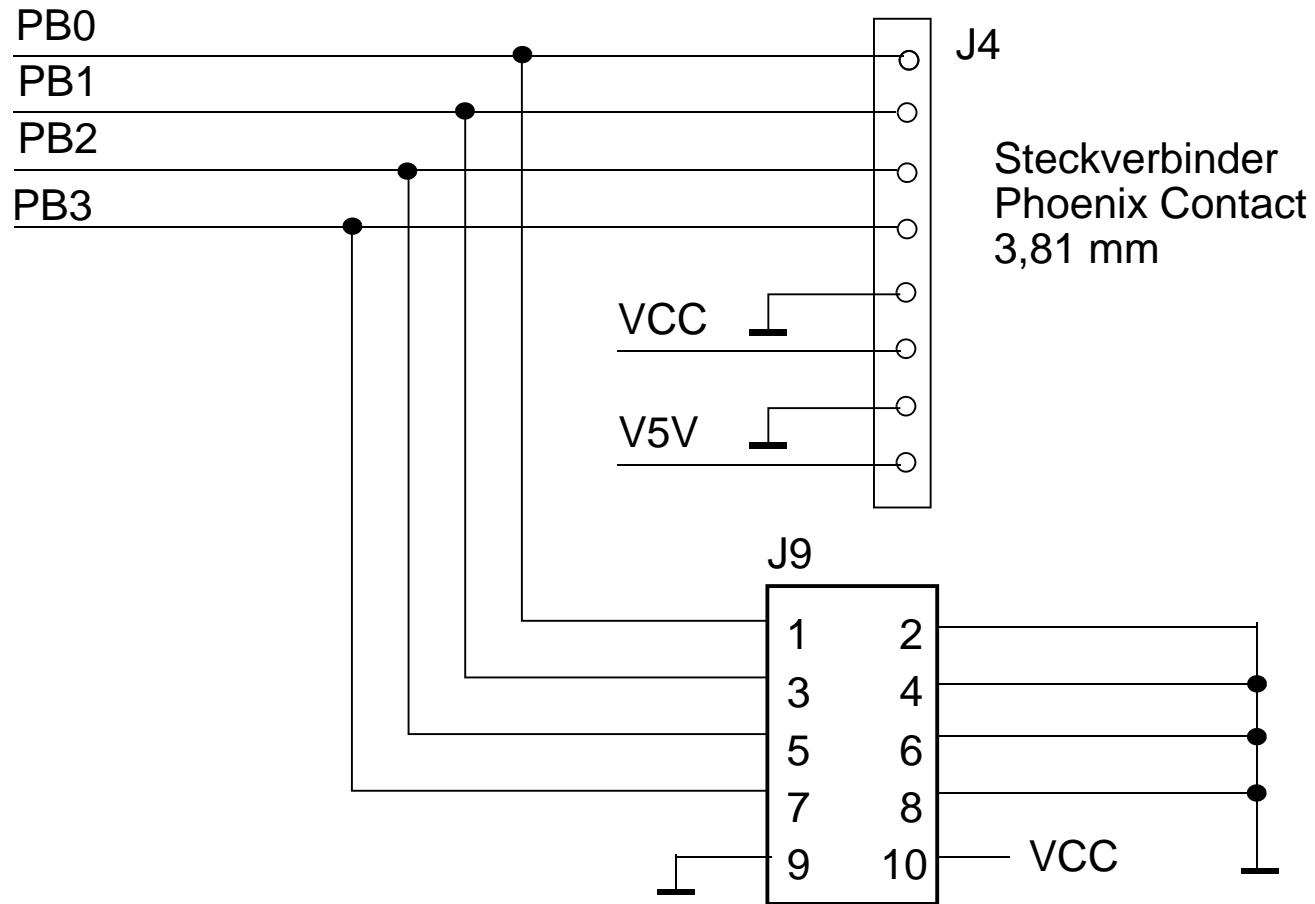
19. 2. 2014

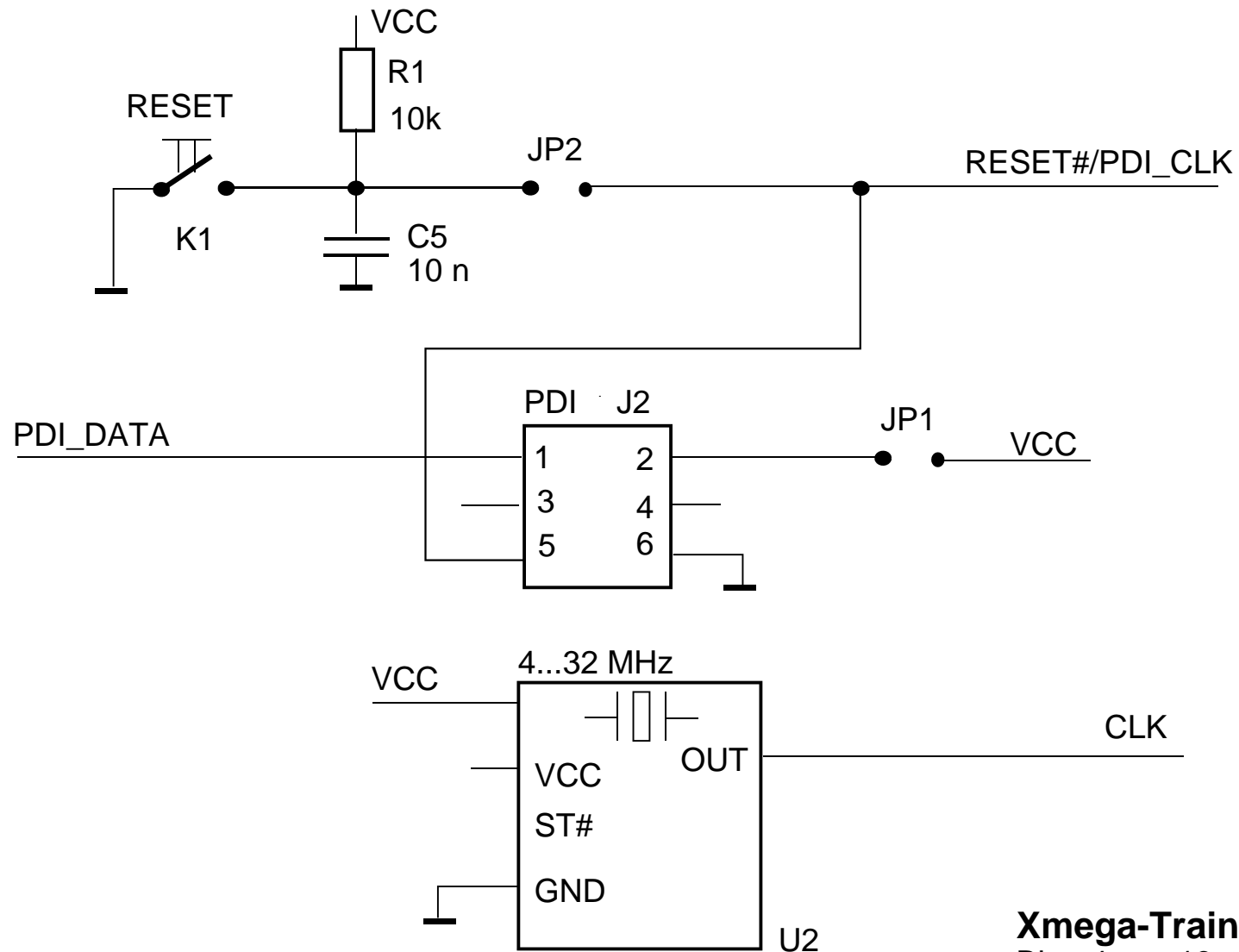


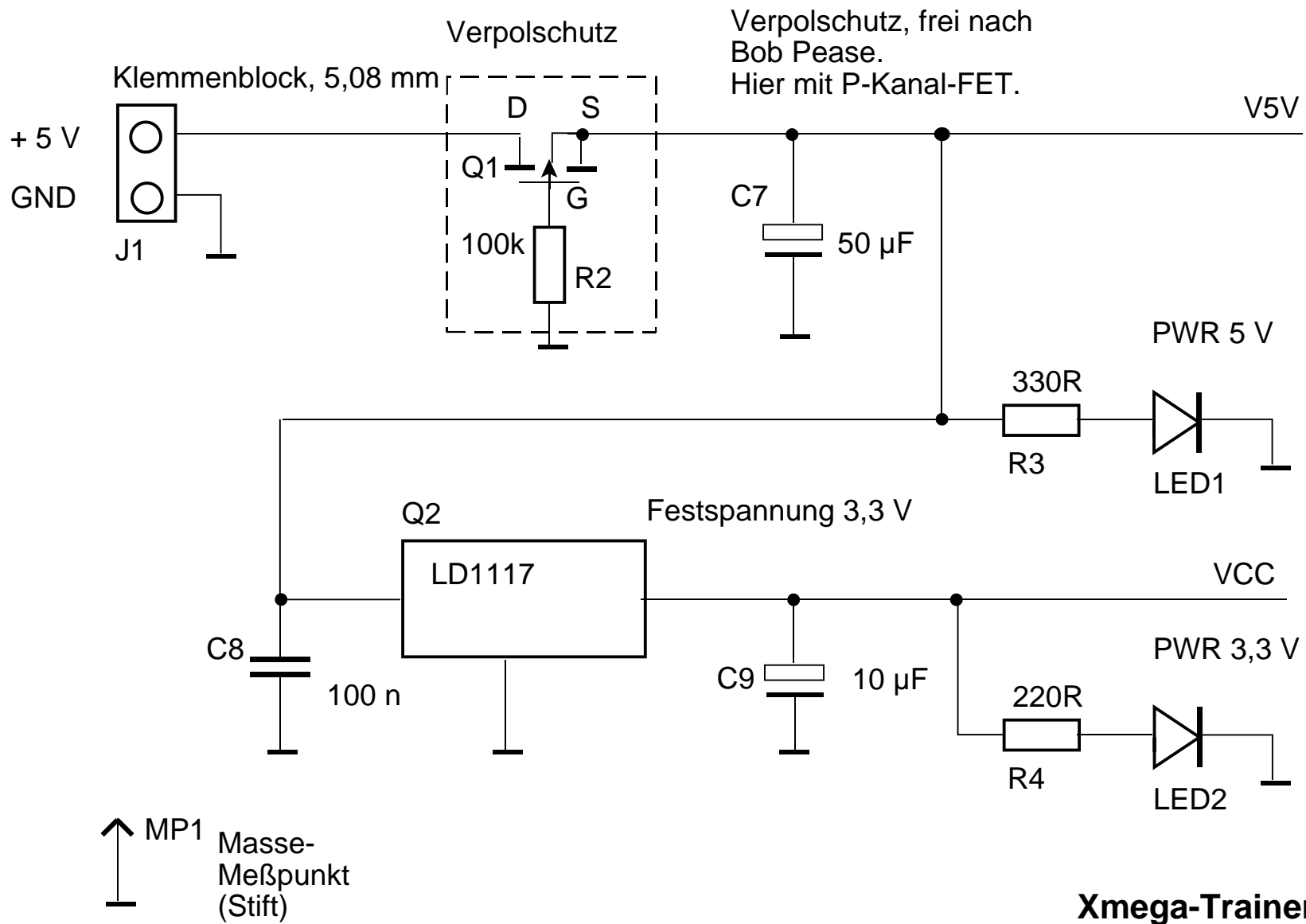
## Xmega-Trainer Typ 2

Blatt 2 von 13

19. 2. 2014



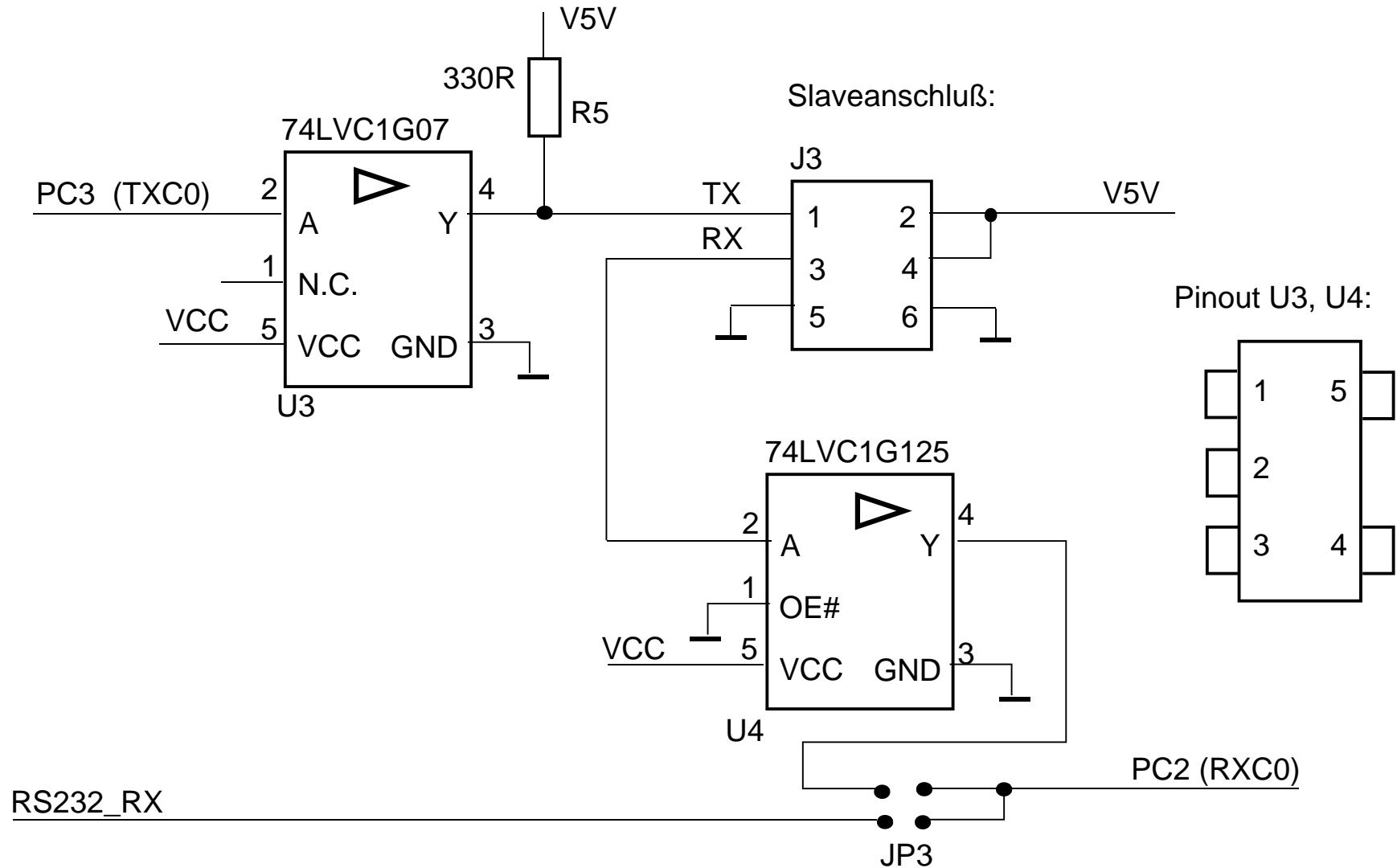




## Xmega-Trainer Typ 2

Blatt 5 von 13

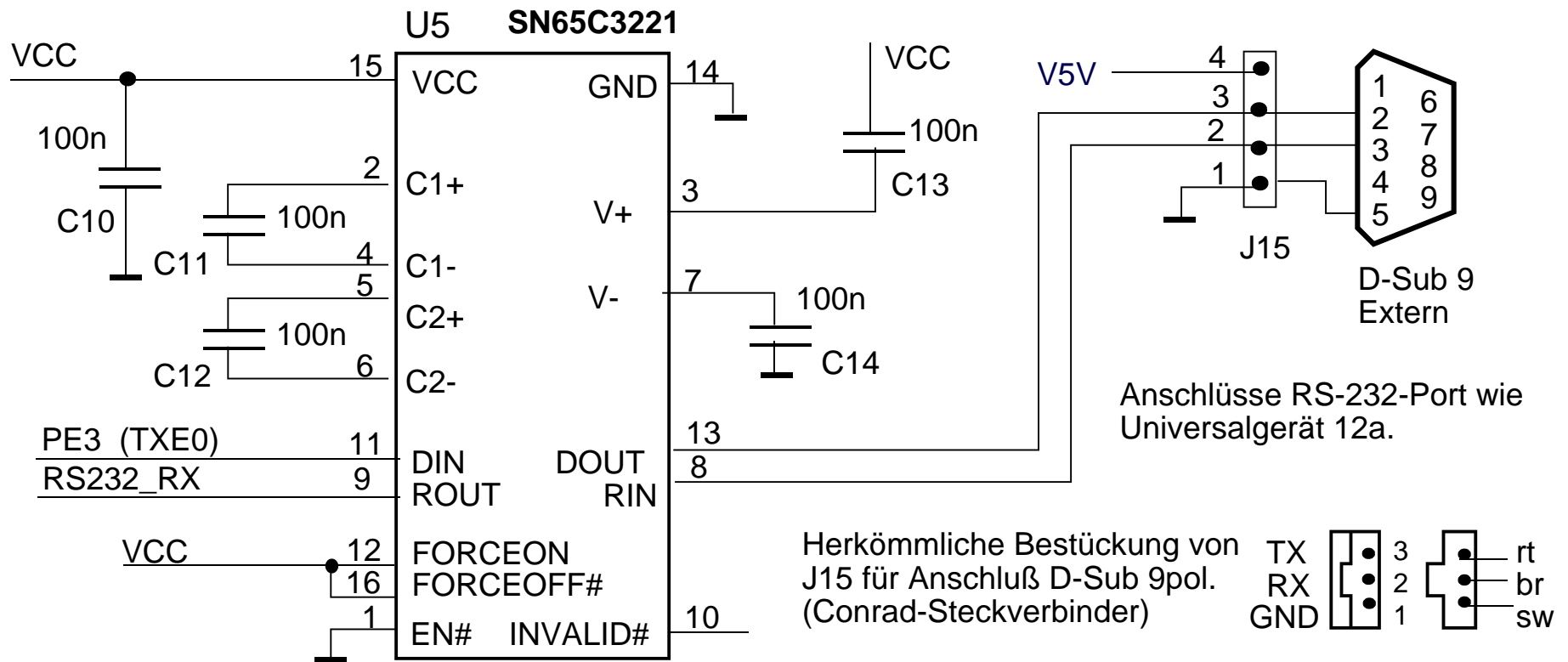
19. 2. 2014



## Xmega-Trainer Typ 2

Blatt 6 von 13

19. 2. 2014

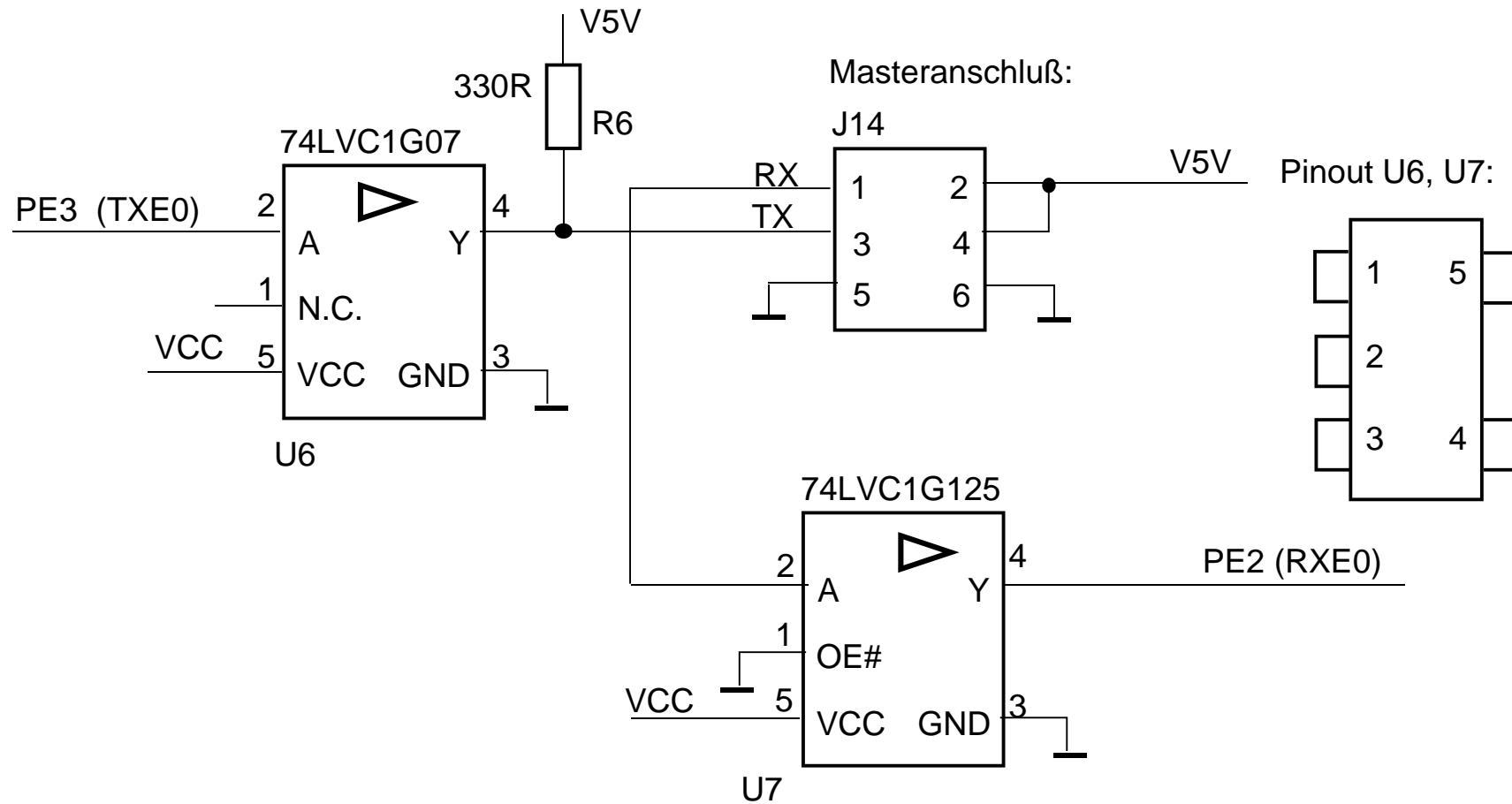


- Das ist nur ein Bestückungshinweis für J15, kein eigener Steckverbinder. -

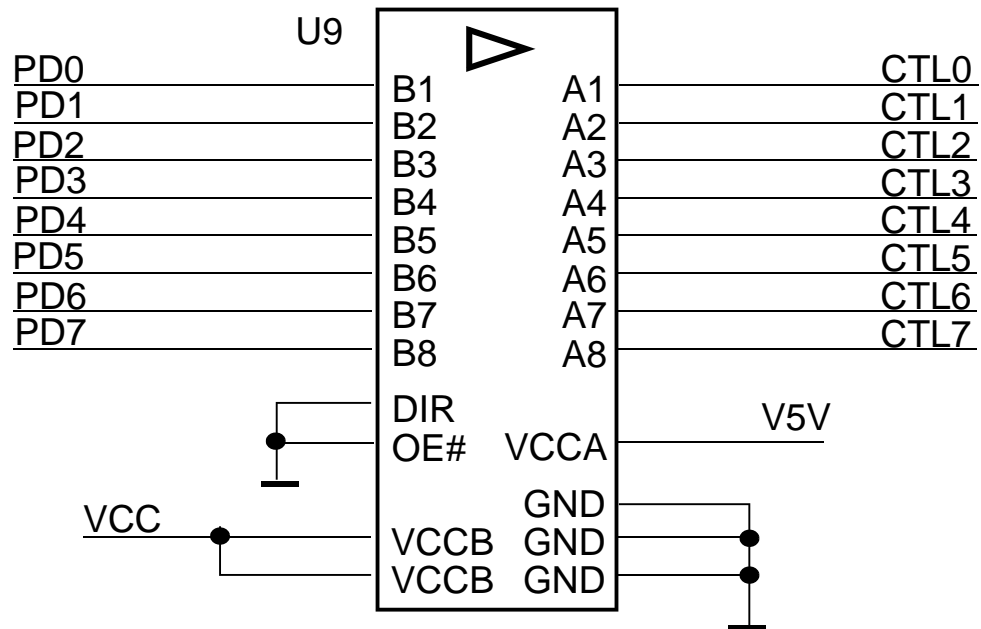
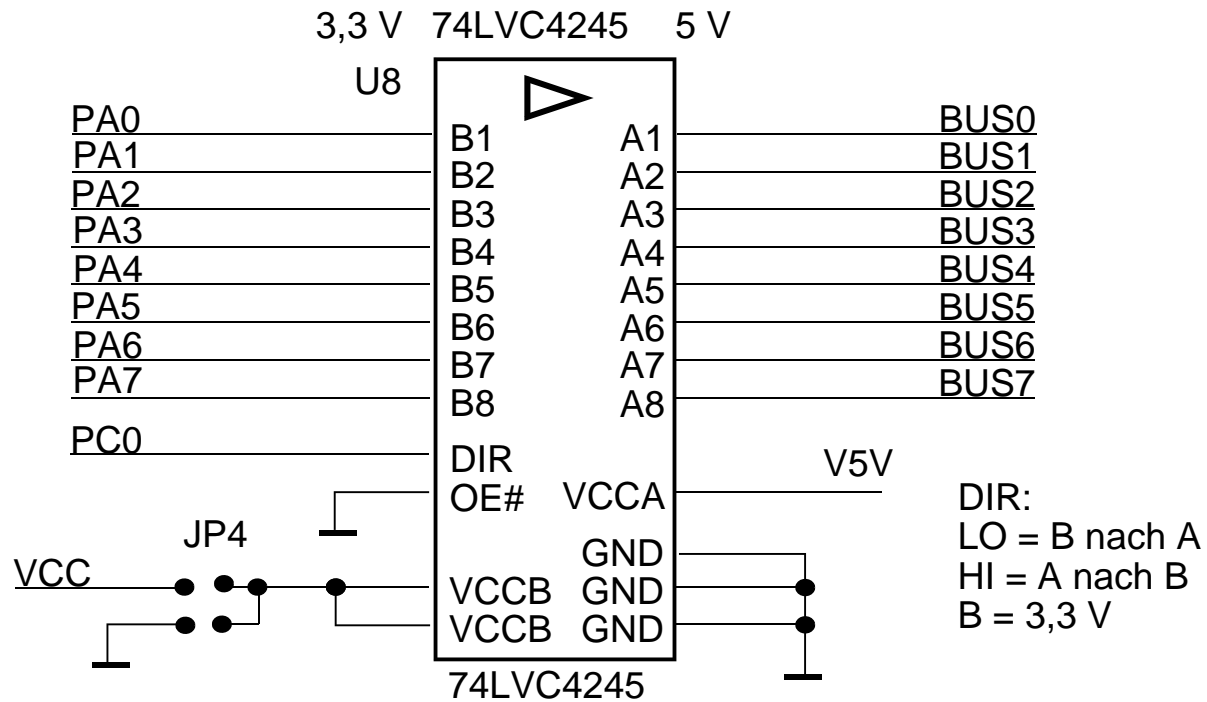
## Xmega-Trainer Typ 2

Blatt 7 von 13

19. 2. 2014



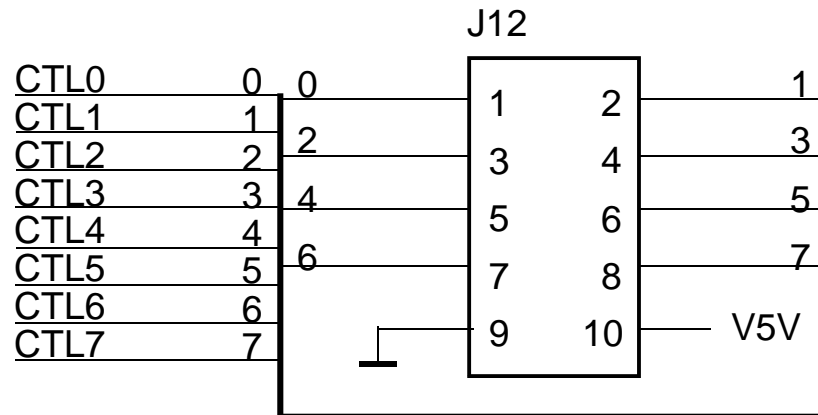
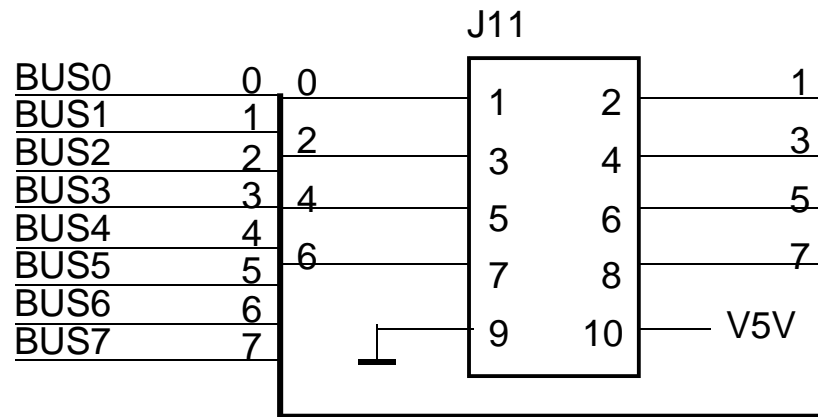


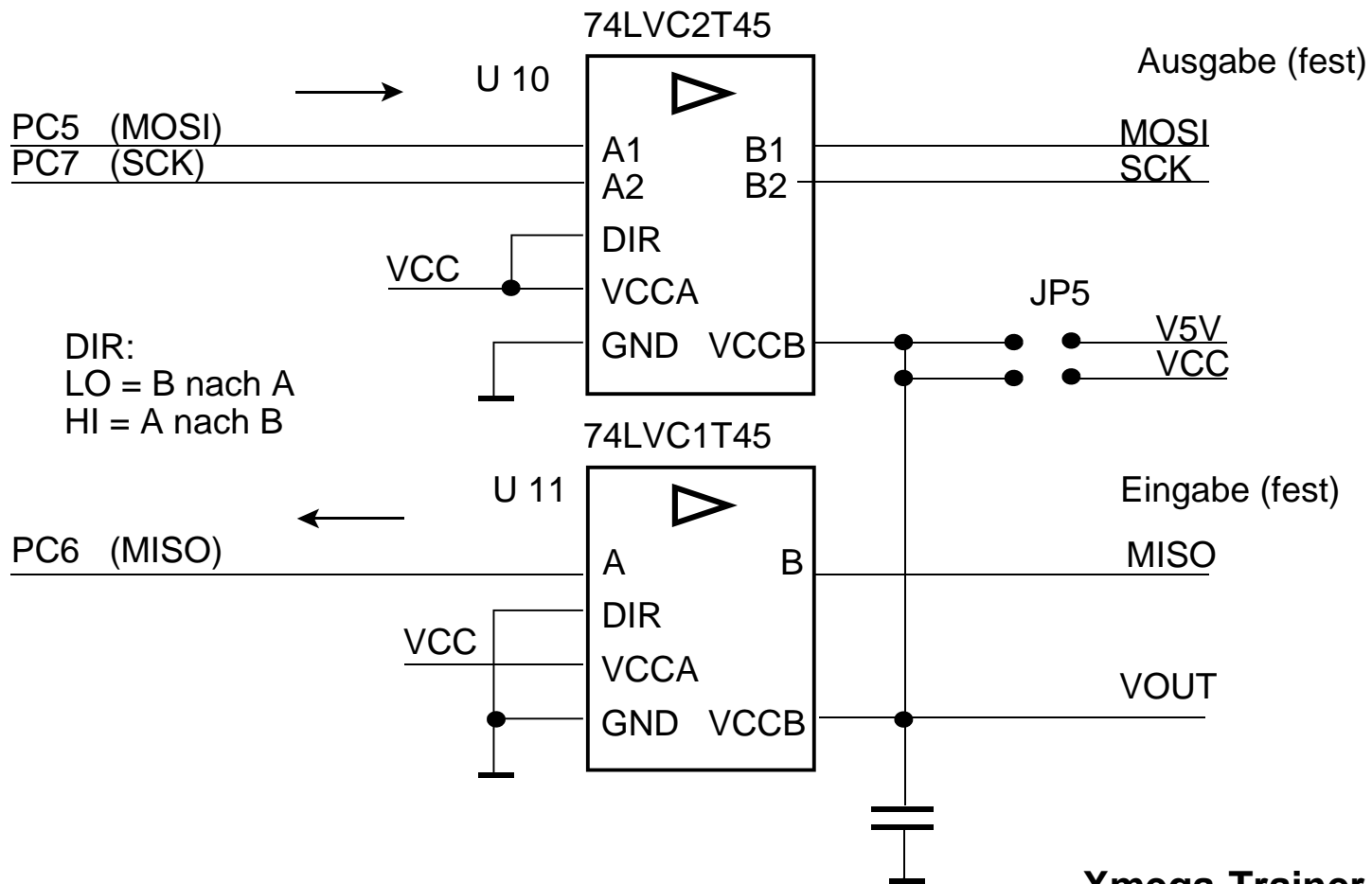


## Xmega-Trainer Typ 2

Blatt 9 von 13

19. 2. 2014

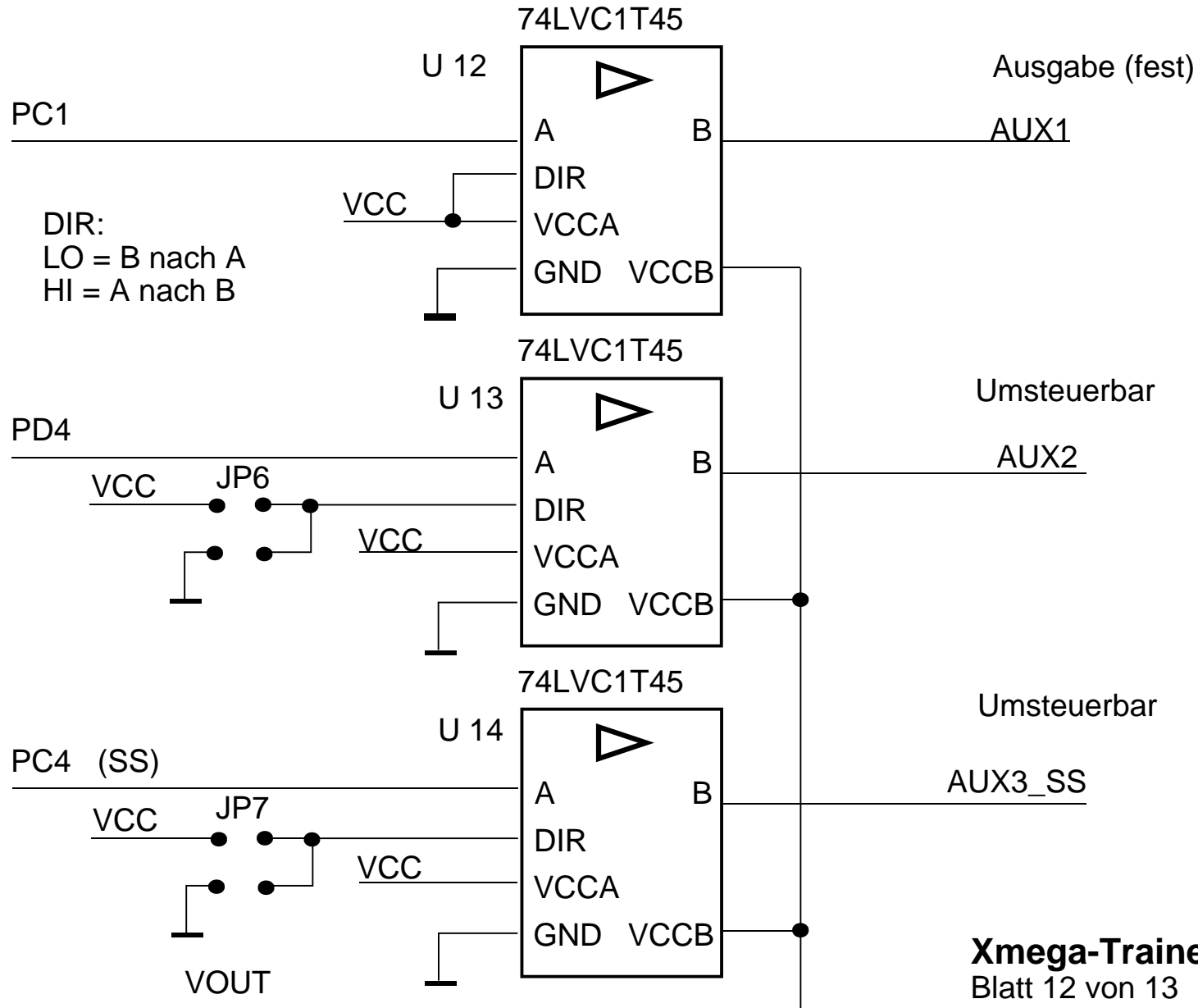




**Xmega-Trainer Typ 2**

Blatt 11 von 13

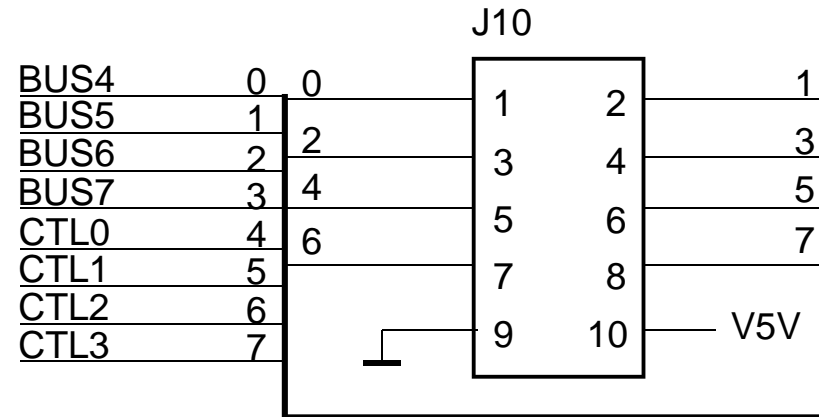
19. 2. 2014



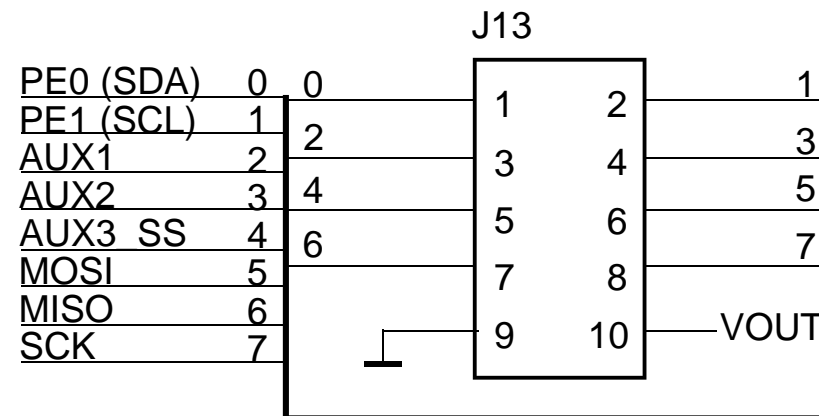
**Xmega-Trainer Typ 2**

Blatt 12 von 13

19. 2. 2014



EBT-Sonderanschluß:  
4-Bit-Bus  
4 Steuersignale



Sonderanschluß  
I2C + SPI