

	A
GND	1
VIO	2
AD05	3
C/BE0#	4
GND	5
AD11	6
AD14	7
V3V	8
SERR#	9
GND	10
STOP#	11
V3V	12
FRAME#	13
GND	14
AD18	15
AD21	16
V3V	17
IDSEL0	18
AD24	19
GND	20
AD29	21
V5V	22
REQ0#	23
GND	24
GNT1#	25
V5V	26
CLK2	27
GND	28
V12P	29
V12M	30

	B
V5VSB	1
AD02	2
GND	3
AD07	4
AD09	5
VIO	6
AD13	7
C/BE1#	8
GND	9
PERR#	10
V3V	11
TRDY#	12
GND	13
AD16	14
V3V	15
AD20	16
AD23	17
GND	18
C/BE3#	19
AD26	20
V5V	21
AD30	22
GND	23
REQ2#	24
VIO	25
CLK0	26
V5V	27
INTD#	28
INTA#	29
REQ3#	30

	C
V5V	1
AD01	2
AD04	3
GND	4
AD08	5
AD10	6
GND	7
AD15	8
PSON#	9
V3V	10
LOCK#	11
GND	12
IRDY#	13
V3V	14
AD17	15
GND	16
AD22	17
IDSEL1	18
VIO	19
AD25	20
AD28	21
GND	22
REQ1#	23
V5V	24
GNT2#	25
GND	26
CLK3	27
V5V	28
INTB#	29
GNT3#	30

	D
AD00	1
V5V	2
AD03	3
AD06	4
GND	5
M66EN	6
AD12	7
V3V	8
PAR	9
PME#	10
GND	11
DEVSEL#	12
V3V	13
C/BE2#	14
GND	15
AD19	16
V3V	17
IDSEL2	18
IDSEL3	19
GND	20
AD27	21
AD31	22
VIO	23
GNT0#	24
GND	25
CLK1	26
GND	27
RST#	28
INTC#	29
GND	30

J1: PCI/104 Connector

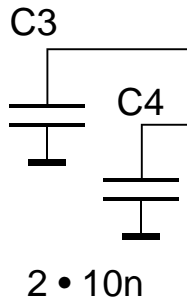
PCI Base Board 14a

Sheet 1 of 6

Revision: 1.2 (January 20, 2016)

	V12M	1	B	A	1	TRST#
	TCK	2			2	V12P
	GND	3			3	TMS
	TDO	4			4	TDI
	V5V	5			5	V5V
	V5V	6			6	INTA#
	INTB#	7			7	INTC#
	INTD#	8			8	V5V
	PRSTN1#	9			9	res.
	res.	10			10	V5VIO
	PRSTN2#	11			11	res.
	GND	12			12	GND
	GND	13			13	GND
	res.	14			14	V3VAUX
	GND	15			15	RST#
	CLK	16			16	V5VIO
	GND	17			17	GNT1#
	REQ1#	18			18	GND
	V5VIO	19			19	PME#
	AD31	20			20	AD30
	AD29	21			21	V3V
	GND	22			22	AD28
	AD27	23			23	AD26
	AD25	24			24	GND
	V3V	25			25	AD24
	C/BE3#	26			26	IDSEL1
	AD23	27			27	V3V
	GND	28			28	AD22
	AD21	29			29	AD20
	AD19	30			30	GND
	V3V	31			31	AD18
	AD17	32			32	AD16
	C/BE2#	33			33	V3V
	GND	34			34	FRAME#
	IRDY#	35			35	GND
	V3V	36			36	TRDY#
	DEVSEL#	37			37	GND
	GND	38			38	STOP#
	LOCK#	39			39	V3V
	PERR#	40			40	res.
	V3V	41			41	res.
	SERR#	42			42	GND
	V3V	43			43	PAR
	C/BE1#	44			44	AD15
	AD14	45			45	V3V
	GND	46			46	AD13
	AD12	47			47	AD11
	AD10	48			48	GND
	GND	49			49	AD09
	GND	50			50	GND
	GND	51			51	GND
	AD08	52			52	C/BE0#
	AD07	53			53	V3V
	V3V	54			54	AD06
	AD05	55			55	AD04
	AD03	56			56	GND
	GND	57			57	AD02
	AD01	58			58	AD00
	V5VIO	59			59	V5VIO
	ACK64#	60			60	REQ64#
	V5V	61			61	V5V
	V5V	62			62	V5V

	V12M	1	B	A	1	TRST#
	TCK	2			2	V12P
	GND	3			3	TMS
	TDO	4			4	TDI
	V5V	5			5	V5V
	V5V	6			6	INTA#
	INTB#	7			7	INTC#
	INTD#	8			8	V5V
	PRSTN1#	9			9	res.
	res.	10			10	V5VIO
	PRSTN2#	11			11	res.
	GND	12			12	GND
	GND	13			13	GND
	res.	14			14	V3VAUX
	GND	15			15	RST#
	CLK	16			16	V5VIO
	GND	17			17	GNT2#
	REQ2#	18			18	GND
	V5VIO	19			19	PME#
	AD31	20			20	AD30
	AD29	21			21	V3V
	GND	22			22	AD28
	AD27	23			23	AD26
	AD25	24			24	GND
	V3V	25			25	AD24
	C/BE3#	26			26	IDSEL2
	AD23	27			27	V3V
	GND	28			28	AD22
	AD21	29			29	AD20
	AD19	30			30	GND
	V3V	31			31	AD18
	AD17	32			32	AD16
	C/BE2#	33			33	V3V
	GND	34			34	FRAME#
	IRDY#	35			35	GND
	V3V	36			36	TRDY#
	DEVSEL#	37			37	GND
	GND	38			38	STOP#
	LOCK#	39			39	V3V
	PERR#	40			40	res.
	V3V	41			41	res.
	SERR#	42			42	GND
	V3V	43			43	PAR
	C/BE1#	44			44	AD15
	AD14	45			45	V3V
	GND	46			46	AD13
	AD12	47			47	AD11
	AD10	48			48	GND
	GND	49			49	AD09
	GND	50			50	GND
	GND	51			51	GND
	AD08	52			52	C/BE0#
	AD07	53			53	V3V
	V3V	54			54	AD06
	AD05	55			55	AD04
	AD03	56			56	GND
	GND	57			57	AD02
	AD01	58			58	AD00
	V5VIO	59			59	V5VIO
	ACK64#	60			60	REQ64#
	V5V	61			61	V5V
	V5V	62			62	V5V

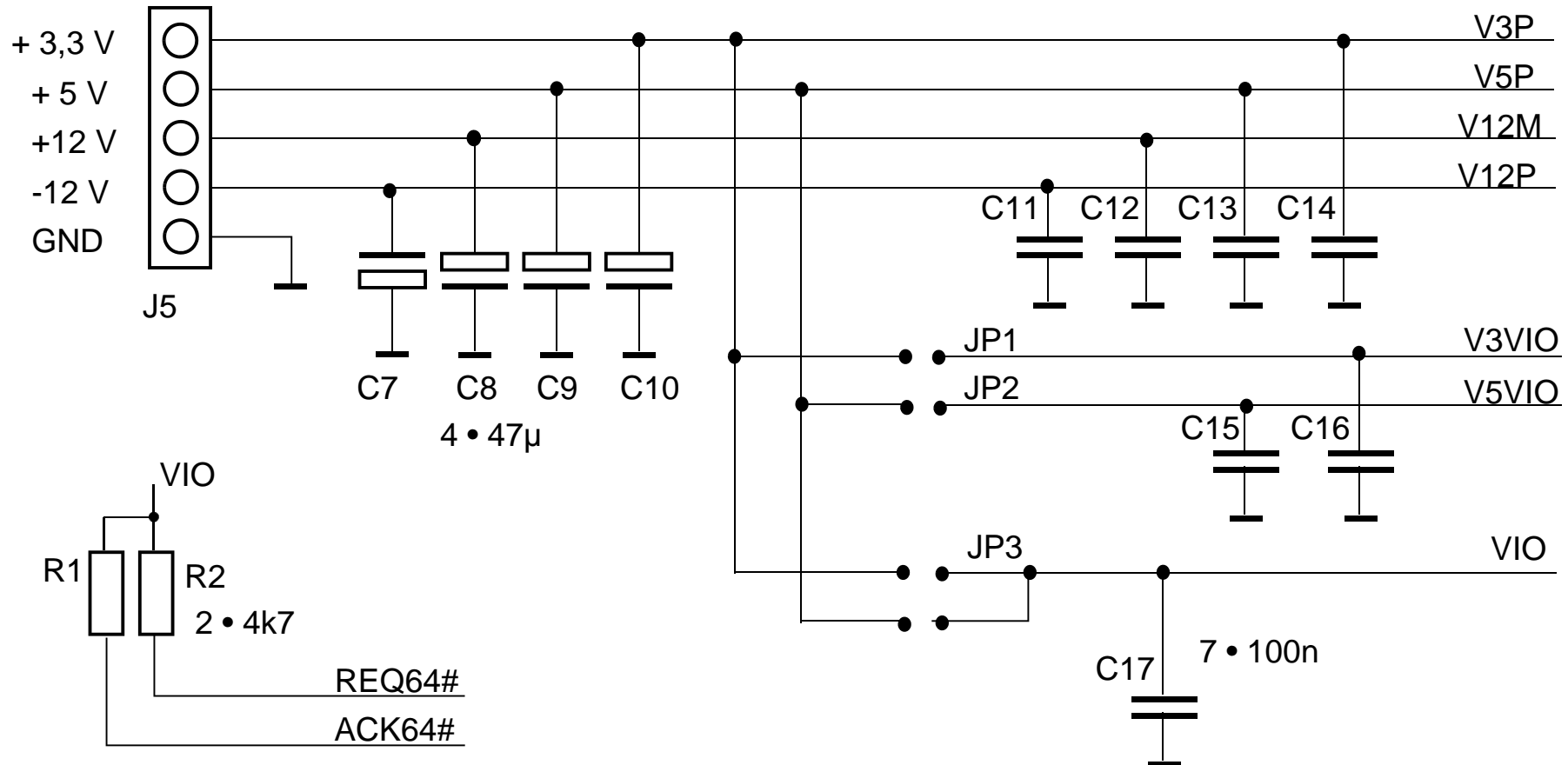


<p>C5 C6 2 • 10n</p>	V12M	1	B	A	1	TRST#
	TCK	2			2	V12P
	GND	3			3	TMS
	TDO	4			4	TDI
	V5V	5			5	V5V
	V5V	6			6	INTA#
	INTB#	7			7	INTC#
	INTD#	8			8	V5V
	PRSTN1#	9			9	res.
	res.	10			10	V5VIO
	PRSTN2#	11			11	res.
	GND	12			12	GND
	GND	13			13	GND
	res.	14			14	V3VAUX
	GND	15			15	RST#
	CLK	16			16	V5VIO
	GND	17			17	GNT3#
	REQ3#	18			18	GND
	V5VIO	19			19	PME#
	AD31	20			20	AD30
	AD29	21			21	V3V
	GND	22			22	AD28
	AD27	23			23	AD26
	AD25	24			24	GND
	V3V	25			25	AD24
	C/BE3#	26			26	IDSEL3
	AD23	27			27	V3V
	GND	28			28	AD22
	AD21	29			29	AD20
	AD19	30			30	GND
	V3V	31			31	AD18
	AD17	32			32	AD16
	C/BE2#	33			33	V3V
	GND	34			34	FRAME#
	IRDY#	35			35	GND
	V3V	36			36	TRDY#
	DEVSEL#	37			37	GND
	GND	38			38	STOP#
	LOCK#	39			39	V3V
	PERR#	40			40	res.
	V3V	41			41	res.
	SERR#	42			42	GND
	V3V	43			43	PAR
	C/BE1#	44			44	AD15
	AD14	45			45	V3V
	GND	46			46	AD13
	AD12	47			47	AD11
	AD10	48			48	GND
	GND	49			49	AD09
	GND	50			50	GND
	GND	51			51	GND
	AD08	52			52	C/BE0#
	AD07	53			53	V3V
	V3V	54			54	AD06
	AD05	55			55	AD04
	AD03	56			56	GND
	GND	57			57	AD02
	AD01	58			58	AD00
	V5VIO	59			59	V5VIO
	ACK64#	60			60	REQ64#
	V5V	61			61	V5V
	V5V	62			62	V5V

Power supply connectors:

1. Terminal block (base strip / removable screw terminals (Phoenix Contact))

2. ATX, 20 contacts: See sheet 6.



Power supply connector ATX, 20 contacts.

